

45M Wumag WT450 Telescopic Mobile Elevating Work Platform

Special features

- Assembly onto a suitable chassis (also all-wheel)
- Stable chassis covering made of aluminium bulb plate
- Aluminium side walls mounted on the chassis decking
- Extensive anti-corrosive package
- Continuously variable stabilizing width/outreach adjustment
- Automatic stabilizer levelling
- Four spreader plates with brackets
- Interchangeable aluminium cage
- Cage centering (transport position indication)
- Door on one cage side for comfortable, upright entrance
- Four anchor points for safety harnesses in the cage
- Relocatable control panel with protective cover and illumination of display and push-buttons
- Reversible slewing direction after panel relocation
- Fully-fledged secondary/emergency control at the base
- All movement functions have end stop damping
- Automatic self-retracting into basic position ("Home function")
- Cage capacity monitoring with display indication
- Cage contact safeguard
- Motor-start-stop from all control panels
- Emergency lowering system in the cage
- 24 V emergency pump
- Battery voltage monitoring in the cage
- Preparation for teleservice
- Electric power line 230 V/10 A with RCD
- Earthing device from cage to base
- CE-mark, declaration of conformity, test certification

Operation areas

- Installation and assembly companies
- Glass and exterior cleaning
- Inspection of Wind power stations
- Telecommunication companies
- TV and Film work
- Renovation and Restoration companies
- Power supply companies

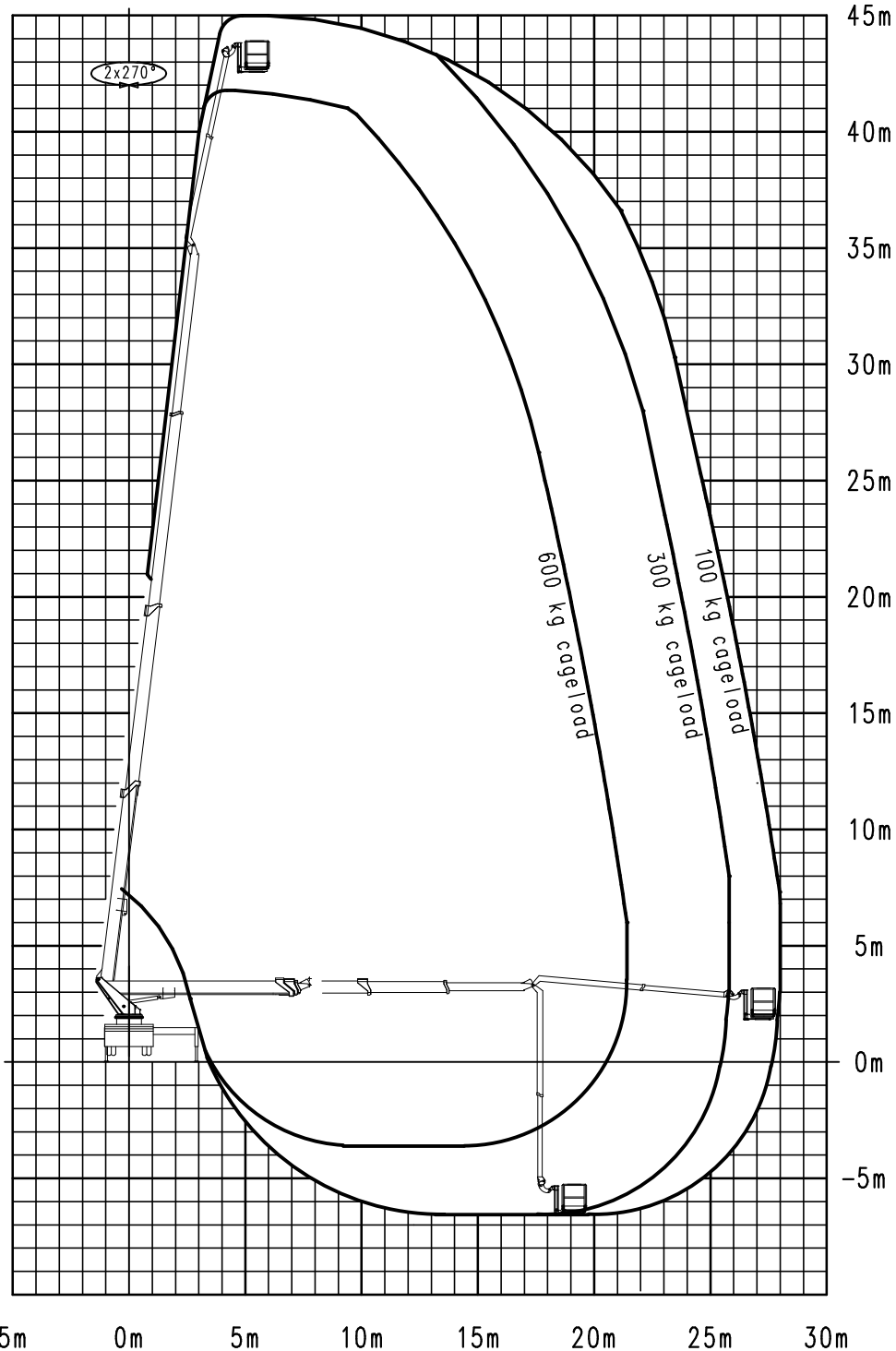
Specifications:

Maximum working height	45 m
Maximum cage floor height	43 m
Sideways outreach	30 m
Maximum cage load	700kg
Turntable rotation	540°
Swivel range of the cage	2 x 80°
Cage boom angle	175°
Cage Dimensions L x W x H	
Standard	2.47 x 1.05 x 1.1 m
Telescopic	3.88 x 1.05 x 1.1 m
Travelling width approx	2.5 m
Travelling length approx	10 m
Travelling height approx	3.65 m
Minimum G.V.M.	18 t

Outreach diagram WT450 **WUMAGElevant**

telescopic cageboom, telescopic cage

RW450344VHAE.ZE1



G.V.W. 23 t

Date: 30.01.2007

The outreach is depending from the vehicle, type of stabilizing and the additional equipment of the mobile elevating work platform.

We reserve our right to technical alterations without prior notice.
C. Wilhelm