

## Special features

- Assembly onto a suitable chassis (also all-wheel)
- Stable chassis covering made of aluminium bulb plate
- Aluminium side walls mounted on the chassis decking
- Extensive anti-corrosive package
- Continuously variable stabilizing width/outreach adjustment
- Automatic stabilizer levelling
- Four spreader plates with brackets
- Interchangeable aluminium cage
- Cage centering (transport position indication)
- Door on one cage side for comfortable, upright entrance
- Four anchor points for safety harnesses in the cage
- Relocatable control panel with protective cover and illumination of display and push-buttons
- Reversible slewing direction after panel relocation
- Fully-fledged secondary/emergency control at the base
- All movement functions have end stop damping
- Automatic self-retracting into basic position ("Home function")
- Cage capacity monitoring with display indication
- Cage contact safeguard
- Motor-start-stop from all control panels
- Emergency lowering system in the cage
- 24 V emergency pump
- Battery voltage monitoring in the cage
- Preparation for teleservice
- Electric power line 230 V/10 A with RCD
- Earthing device from cage to base
- CE-mark, declaration of conformity, test certification

## Operation areas

- Installation and assembly companies
- Glass and exterior cleaning
- Inspection of Wind power stations
- Telecommunication companies
- TV and Film work
- Renovation and Restoration companies
- Power supply companies

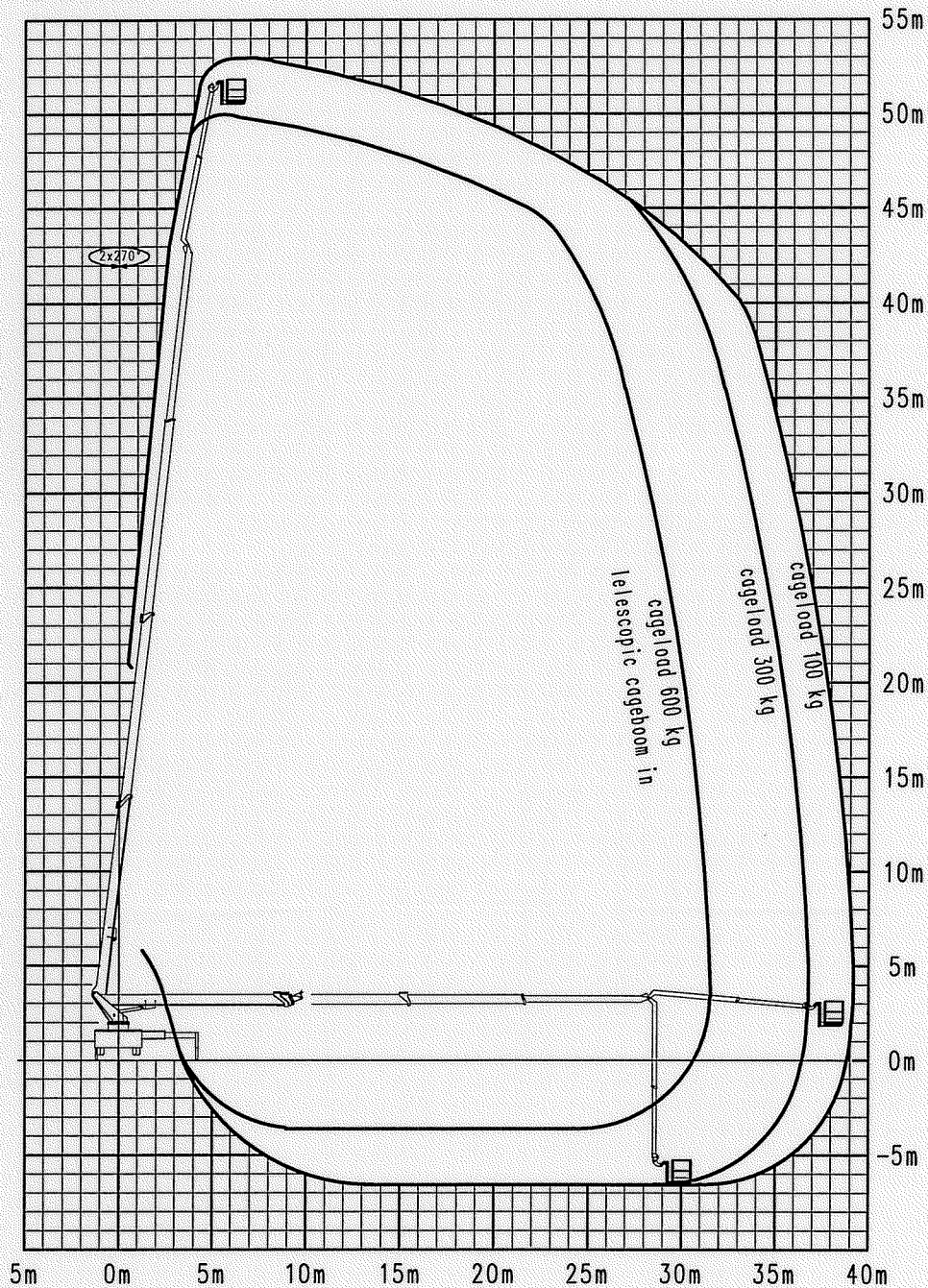
*Detailed Specifications:*

Maximum working height	53 m
Maximum cage floor height	51 m
Sideways outreach	up to 39 m
Maximum cage load	700kg
Turntable rotation	540°
Swivel range of the cage	2 x 80°
Cage boom angle	175°
Cage Dimensions L x W x H	
Standard	2.47 x 1.05 x 1.1 m
Telescopic	3.88 x 1.05 x 1.1 m
Travelling width approx	2.5 m
Travelling length approx	12 m
Travelling height approx	3.9 m
Minimum G.V.M.	18 t

# Outreach diagram WT530

telescopic cageboom, telescopic cage

RW530028VHAE.ZE1



G.V.W. 31 t

Date: 18.05.2009/ Do

The outreach is depending from the vehicle, type of stabilizing and the additional equipment of the mobile elevating work platform.

We reserve our right to technical alterations without prior notice.