

Technical details

21 320 502

Main dimensions

Height, overall	approximately	3,89 m
Length, overall (in driving mode)	approximately	8,54 m
Width, overall (in driving mode)	approximately	2,52 m
Stabilisation width (outside edge bottom pan):		
outriggers withdrawn		2,50 m
outriggers extended (both sides)		6,24 m
outriggers extended (one side only, R or L)		4,38 m

Working Data

Plattform height		30,00 m
Working height		32,00 m
thereby sideways reach		5,00 m
max. lateral range (at 100 kg rated load)		25,50 m
Max. turning capacity		500 °
Max. cage swivel capacity		2x90 °
Maximum permissible inclination		0 / 2 °

Weights

Gross Vehicle Weight		18000 kg
Elevating Work Platform Weight (without carrier vehicle)		9502 kg
Maximum permissible cage load		600 kg

Electrical system

Current supply from chassis		
to cage (external feed)		230 ACV
Vehicle (on Board)		24 DCV

Working Times (approx. rate)

(Mainboom lifted)

Telescope in / out		52 s
Cageboomtelescope in / out		26 s
Cageboom up / down		55 s

(Telescope retracted)

Turn right / left (90°)		35/34 s
Mainboom up / down (40°)		52/50 s

Stabilisers, mainboom, cageboom, telescope, turning mechanism

Pump feed rate (approx.)		130 l/min
max. working pressure	max.	195 bar

Oil type: mineral oil

AVIA FLUID HLPD 22

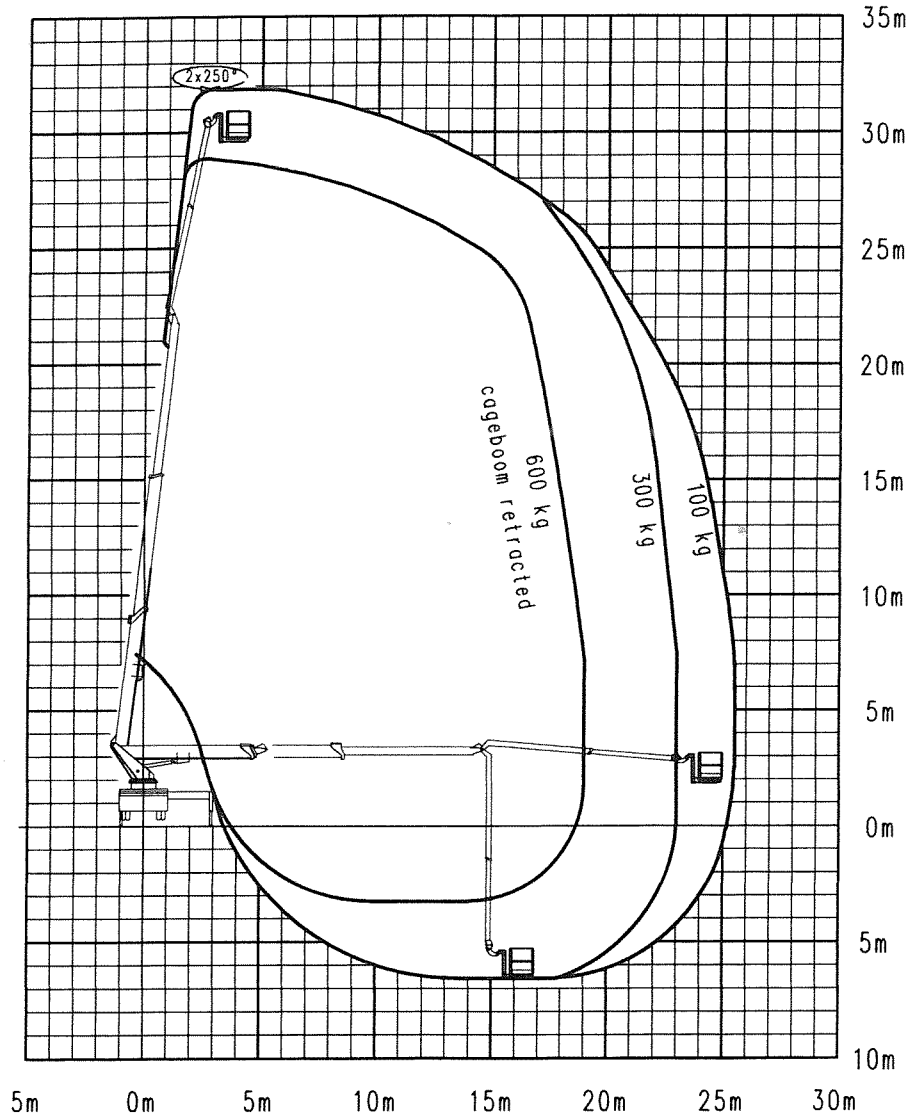
**A-bewerteter Schalleistungspegel
(geprüft nach 2000/14 EG)**

96 dB (A)

outreach diagram P320

telescopic cage boom, telescopic cage

RW21320502VHE.Zei



G.V.W. 18 t

12.11.2010/Dop

The outreach is depending from the vehicle, type of stabilizing and the additional equipment of the mobile elevating work platform.

We reserve our right to technical alterations without prior notice.